

# PHIL-CAST™

(ORTHOPEDIC CASTING TAPE)



- \* Exporting to over 40 countries since CY1990
- \* Synthetic fiberglass / polyester textile impregnated polyurethane resin.
- \* In addition, all sources are supplied from Korea & Japan

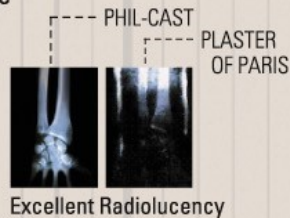
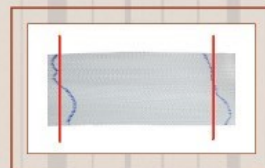
**Application**

⊙ PRECAUTION

- ☑ No pinholes on the pouch
- ☑ The warmer water shortens the setting time and cooler water makes it slow

(1) Applying Stockinet → (2) Cast padding → (3) Rolling PHIL-CAST with gloved hands 10-15 min. required for weight bearing

Textile function!! Great moldable by more 30% tensional textile



## CHARACTERISTICS

- Light weight and Strong protection
- Short setting time and easy smooth molding by slippery agent contains
- Wonderful protective rigidity against unexpected impact

## International certification marked and details of packing



ITEM NO.	SPEC.	PACKING	CARTON
MK-3702	2'X4YDS(5.0cmX3.6m)	10pcs/inbox	150pcs/CT
MK-3703	3'X4YDS(7.5cmX3.6m)	10pcs/inbox	150pcs/CT
MK-3704	4'X4YDS(10.0cmX3.6m)	10pcs/inbox	120pcs/CT
MK-3705	5'X4YDS(12.5cmX3.6m)	10pcs/inbox	100pcs/CT

## Recommendable size & quantity

	SMALL BUILD 3.6m			LARGE BUILD 3.6m		
	7.5cm	10cm	12.5cm	7.5cm	10cm	12.5cm
		2		1	2	
		4		1	2	2
		3			1	2
	1			1		
	2			2	1	
	1	2	2	2	2	2
		1	2		1	3

## MIKA's global partnership

